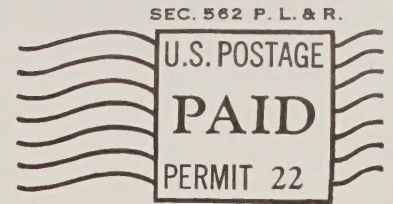
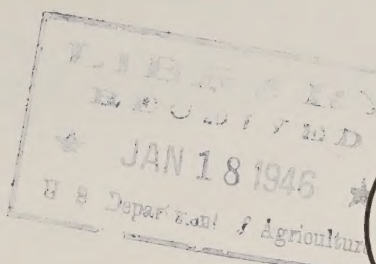


Historic, Archive Document

Do not assume content reflects current scientific knowledge, policies, or practices.

02.11
RETURN POSTAGE GUARANTEED —



HARROLD'S - GARDENER

VEGETABLE AND FLOWERING PLANTS AND SEEDS — SPRING 1945

HARROLD'S PANSY GARDENS & GREENHOUSES

P. O. BOX 29 — GRANTS PASS, OREGON.

PLEASE READ — EARLY ORDERING IS ADVISABLE

In this folder is offered a wide selection of vegetable and flowering plants with which to complete your spring gardening plans. We have our usual large supply as the season starts and in some cases it is possible for us to supplement our own stock from wholesale sources should there prove to be a shortage. It is not possible to do this on all items, however, and so we will fill all orders subject to availability as they are reached in the rotation of their arrival. For this reason it is suggested that early ordering will do much to assure your receiving your complete selection.

As with nearly every civilian enterprise, we have experienced an active demand for the material we supply. Also the supply of suitable labor is limited and at certain rush periods is not sufficient to maintain pre-war promptness in shipping. Therefore ALL orders will be shipped in strict rotation of their arrival and will have individual and careful attention on that basis. Most of the time we have maintained shipping service within 2 to 6 days from receipt of order. As always it is our endeavor to supply good stock, well packed and shipped as promptly as conditions permit.

PLEASE NOTICE

ORDERING BY MAIL

As in the past, our service is as near as your own mail box. We are the largest mail order shipper of horticultural products in Southern Oregon and Northern California and are equipped to serve you efficiently.

Prices In This List Are Prepaid

In the first three postal zones (300 miles.) Elsewhere by Express Collect

No mail order for less than \$2.50 accepted.

In former years we made a separate charge for packing and postage but with so many new customers overlooking this charge we have, this year, combined the shipping charges into the catalogue price of the merchandise. In order to do this we have had to set a minimum size on the orders that can be shipped at a figure which will allow a return to cover packing and transportation. Therefore PLEASE do not ask us to ship orders amounting to less than \$2.50. You pay one price and the material is delivered to your door.

QUANTITY LIMITS

We do not sell individual items which amount to less than 10c. That is if a dozen vegetable plants sell at 20c a half dozen is the smallest quantity that will be sold in that one item and variety. A great many flower items are offered in separate colors in which case never less than half a dozen of a color will be supplied and marked as to color. In any case where order does not conform to these conditions we will make the necessary changes to make it conform.

Be sure and make full remittance as no accounts or billing is possible and if insufficient funds are sent it will mean that items will be omitted to the value of the shortage. Any refund due you will be made promptly. See terms of sale at the end of this list.

SERVICE AT THE NURSERY

As in the past come to the nursery and greenhouses for your gardening needs if you can. We shall be glad to serve you here at the Gardens as we have for the past 18 years. Prices are lower in some cases at the gardens.

Please Make Second Choice

Wherever possible when order is for plants of specific variety or color it will sometimes allow completion of your order if you give a second choice or two. Even though we grow an extensive line of stock in the more popular varieties it is never possible to completely gauge the call that will be made for each and there are always some shortages no matter how carefully we plan. Frequently similar stock in another slightly different kind will remain available and whenever this is the case and we have no other instructions we will use our best judgement and send the available substitute. IF THIS DOES NOT MEET YOUR APPROVAL PLEASE SAY SO WHEN ORDERING.

Vegetables

Our line of vegetable plants embraces the best varieties adaptable to this locality. We confine ourselves strictly to standard tested varieties—disregarding freak and renamed sorts so often offered by part time growers and mail order shippers.

Not Less Than 50 of an Item Supplied at the 100 rate

VARIETY	Price per doz.	100
BROCCOLI PLANTS—		
GREEN SPROUTING CALABRESE: The green winter Broccoli.	\$.25	\$1.50
ST. VALENTINE: White headed winter Cauliflower.25	1.50
Broccoli plants ready for setting after June First.		
CABBAGE PLANTS— Early		
COPENHAGEN MARKET: Solid mid-season head. Fine flavor.15	1.00
EARLY JERSEY WAKEFIELD: Extra early cone shaped head.15	1.00
GOLDEN ACRE: Best round headed early. Extra fine flavor.15	1.00
CABBAGE PLANTS— Main Crop		
PREMIUM FLAT DUTCH: Largest heads, sometimes over 12lb.15	1.00
WISCONSIN BALLHEAD: Medium size round head. About 7lb.15	1.00
WISCONSIN RESISTANT: Yellows resistant. Heavy round head.15	1.00
Late Cabbage will be available anytime after June First.		
CAULIFLOWER PLANTS—		
EARLY SNOWBALL: Considered the earliest and best.25	1.50
CELERY PLANTS—		
GOLDEN SELF BLANCHING: Solid stocks of good flavor. Yellow.15	1.00
UTAH GOLDEN: Large green type for fall and winter.15	1.00
EGG PLANT—		
BLACK BEAUTY: Excellent. Fruit large and of good flavor.25
GROUND CHERRY PLANTS—		
These are fine for preserves or may be eaten fresh.35
PEPPER PLANTS—		
ANAHEIM CHILI: Hot. Long tapered fruit. Green ripening red.25	1.50
BELL: Mild and large. Prolific. Green changing to scarlet.25	1.50
BULLNOSE: Hot. Medium large but plant habit rather small.25	1.50
CALIFORNIA WONDER: Sweet. Early and vigorous plant.25	1.50
CAYENNE LONG RED: Very hot red fruit.25	1.50
PIMENTO: A sweet, pungent small pepper for seasoning.25	1.50
TOBACCO: The hot pickling and sauce pepper. Really hot.25	1.50
WORLD BEATER: Sweet mid-season. Quite productive.25	1.50

VEGETABLE PLANTS Continued on next page

VEGETABLE PLANTS Continued.

VARIETY	Price per doz.	100
SWEETPOTATO PLANTS—		
These give excellent results in a wide variety of soil types. They produce well and have a fine flavor here.		
CALIFORNIA JERSEY: The most universally successful variety. Flesh is deep yellow. Sweet and medium dry.	\$.25	\$1.60
PUERTO RICO: A moist fleshed dark yellow variety of the Yam type. Prefers warm sandy soil.25	1.60
500 plants for \$7.50; 1,000 for \$14.00. Write for prices on larger quantities		

TOMATOES—

HARROLD'S SPECIAL: Similar to Redhead but earlier and more productive. We are the originators of this variety and it is not surpassed for the home garden. Bears over a full season starting about ten days after Earliana. A really quality fruit.20	1.20
MARIGLOBE: Fine semi-early. Robust plant. Blight resistant.20	1.20
YELLOW PONDEROSA: Large fruited yellow. Sub-acid. Very mild.20	1.20
YELLOW PEAR: Also Red Pear. Small preserving Tomatoes.20	1.20
In Harrold's Special and Mariglobe we can usually supply larger size plants at 35c a dozen; \$2.50 per 100.		

Flowers

Annual Flowering Plants

In spite of the fact that annuals must be planted each year usually and that they may require a little more care than hardy perennials, they are still the most dependable & colorful plants in any garden. Many annual varieties have a blooming season extending over a period of weeks; even months and it is to them that we must look for nearly all the summer and fall flowers. No garden can be completely colorful without the liberal use of annuals.

PLANTS OR SEEDS— We are in a position to supply either plants or seeds of practically all the varieties that are most useful. **OUR PLANTS** are started early; grown cool and they give you the advantage of several weeks start over the use of seeds. Prices on these are moderate as you will see. **OUR SEEDS** are all of the finest strains; the same as we use in our plant growing operations and the same as we supply to hundreds of professional florists and nurserymen throughout the country. They are **ALL FLORIST QUALITY SEEDS**

LEFT HAND price column is price of plants per dozen; **RIGHT HAND** column is the price of seeds per packet and our packets are most liberal in quantity, containing about twice the seeds of the usual retail packet of equal price.

VARIETY	Plants per doz.	Seeds
AGERATUM—		
MIDGET BLUE: Smallest of all, 3 in. Very brilliant blue.	\$.30	\$.10
LITTLE BLUE STAR: A very dwarf light blue.30	.10
ALYSSUM—		
LILAC QUEEN: Lilac lavender. Excellent for borders.15	.10
LITTLE GEM: Pure white, about 4 ins. tall. (Carpet of Snow.)10	.10
VIOLET QUEEN: The most colorful. Rich violet. About 4 in.15	.10

ASTERS—

PRINCESS: A NEW group in colors of which Aurora Golden Sheaf was the forerunner. Same tufted flower form as Sheaf. Anna — peach blossom; Bonnie — rose; Marsha — scarlet and Mixed.35	.15
SUPER GIANT LOS ANGELES: Chrysanthemum type shell pink.35	.10
HEART OF FRANCE: Rich dark red. Medium size.35	.10
Calif. Giants: Large Chrysanthemum like flowers of largest size. Plants 3 ft. tall. Blooms from late summer right up to frost. COLORS- Apple blossom, carmine rose, dark purple, deep rose, light blue, white and mixed.35	.10
IMPROVED CREGO: Smaller than Calif. Giants but similar in flower form. Blooms much earlier. COLORS- Blue, dark violet, deep rose, light blue, shell pink, white and mixed.35	.10
QUEEN OF THE MARKET: The earliest Aster. Flowers in early August producing many flowers of nice size. Plants are about 20 in. high. COLORS- Azure blue, dark blue, light blue scarlet, white and mixed.30	.10

BALSAM—

GARDENIA FLOWERED MIXED: Finest double. Grand colors.25	.10
---	-----	-----

BEGONIAS— Fibrous Rooted.

We have a fine stock of these this year and the price is very reasonable for this type of plant. They are fine for bedding in protected, warm situations where they have half a days shade or they make ideal porchbox, hanging basket or pot plants. They are very fine as winter house plants.

COLORS- Pure white, apple blossom, light pink, deep pink, scarlet, crimson and rose pink. Some have bronze leaves.75	.25
--	-----	-----

ANNUAL FLOWERING PLANTS Continued.

VARIETY	Plants per doz.	Seeds
COLEUS—		
RAINBOW MIXED: A brilliant colored foliage plant that makes excellent pot or border plants. Leaves are brightly colored.	\$.60	\$.15
HELIOTROPE—		
GIANT HYBRIDS: Delightfully fragrant. A fine bedding plant and also for pot culture. Ranges from white to violet.35	.10
REGAL MIXED: Dwarf plant and giant flowers. Very nice.50	.15
HOLLYHOCK—		
INDIAN SPRING: A beautiful and unusual plant. About 6 ft. tall the flowers are born in the leaf axis rather than at the terminal of shoots. Flowers are large and leaves luxuriant. Colors in the mixture are pink and rose heavily ruffled.35	.15
LOBELIA—		
CHRYSTAL PALACE COMPACTA: Dark blue flowers and dark reddish green foliage. Very compact.20	.10
PENDULA SAPPHIRE: Trailing type. Deep blue flowers with white eye. Foliage bright green. Fine for box and basket edging.20	.10
PENDULA HAMBURGIA: Bright sky blue trailing.20	.15
MARIGOLDS—		
GIGANTEA FULL DOUBLE MIXED: Flowers immense in size often 6 in. across and all fully double. Colors range from light to deep yellow and a full range of orange shades. Plants 4 ft. tall	.35	.15
GIGANTEA FULL DOUBLE ORANGE: Finest orange shades.35	.15
GIGANTEA ORANGE SUNSET: Same as above but variable.30	.15
GIGANTEA SUNSET GIANTS: More variable than Full Double in flower form and a wider range of colors.25	.10
DWARF GIGANTEA POT O' GOLD: Plants 12 to 14 in. high, early flowering with flowers 4 in. or more in diameter. Fully double of intense golden orange. Dwarf counterpart of Orange Sunset.35	.15
DWARF GIGANTEA GYPSY JEWELS: Same habit as Pot O' Gold but in a full range of mixed colors.35	.15
GUINEA GOLD: Large Carnation flowered golden orange. Fine.25	.10
MISSION GIANT GOLDSMITH: NEW— Incurved Chrysanthemum type giant of golden orange. Plants about 18 inches high.30	.15
AMERICAN BEAUTY MIXED: Chrysanthemum type in a fine color range of yellow and orange. Flowers large, plant about 3' tall.	.30	.15
COLLERET CROWN OF GOLD: Foliage completely odorless. The flowers have crested centers with broad guard petals. Color is golden orange. Flowers about 3 in. Plant about 3 ft.30	.10
HARMONY HYBRIDS: Dwarf French type. Fully double and the flowers, usually orange are spotted and striped with mahogany or velvet brown. Most striking.30	.10
ALL DOUBLE ORANGE: Tall African, golden orange.25	.10
ALL DOUBLE LEMON: Same as above but lemon yellow.25	.10
NIEREMBERGIA Hippomanica—		
PURPLE ROBE: Half hardy, 6 inches tall and covered with lots of 2 inch, bell shaped flowers of the richest blue.50	.20
PETUNIAS—		
DOUBLE FLOWERED SEPARATE COLORS: These are propagated from the finest specimen plants that are true to type. COLORS- pink, carmine, rose and red.	Price 30c each.	2.50
DOUBLE FLOWERED MIXED: These are the big flowered kind that look like huge Carnations. Being from seed, however, there will be a few semi-double flowering plants among them. Mixed colors ranging from red and pink to white.	1.00	.50
GLAMOUR: NEW— Calif. Giant Ruffled. Huge ruffled salmon rose with yellow throat, penciled deep purple. Flowers to 8 in. across.75	.25
OREGON ROSE: NEW— Calif. Giant Ruffled. Brilliant pure rose. Open throat of deeper shading. Huge flowers to 8 in. across.75	.25
ROSE TRIUMPH: NEW— Rich deep rose with penciled throat. Huge flowers to 8 in. across on compact plants.75	.25
BODGER'S SUPREME: Calif. Giant Ruffled. The best selection of pink and rose shades. Huge flowers and fine coloring.75	.25
SUPER FLUFFY RUFFLES: Giant flowers that are so heavily ruffled they appear almost double. Colors a select blend.75	.25
DWARF RAMONA GIANTS: Calif Giant Ruffled. Flowers up to 6 in. across on plants a foot high. Heavily ruffled in the finest colors.75	.25
HARROLD'S SPECIAL BLEND: Our own selection of the very best in the giant ruffled Petunias. An outstanding mixture.75	.25
GRANDIFLORA COMPACTA: A group of giant flowered ruffled types with low growing plants.		
LACE VAIL: Pure white. The best ruffled white.75	.20
SETTING SUN: Deep rose with dark throat.75	.20
RUFFLED MONSTERS: Semi-dwarf plants producing large ruffled flowers with large open throat.		
CAMILLA: Light coppery rose veined ruby.75	.20
COPPER RED: Coppery scarlet with dark throat.75	.20
SALMON BEAUTY: Salmon rose with deeper veins. Striking.75	.20
PRINCESS OF WERTEMBERG: Rose, deep garnet throat.75	.20
GRANDIFLORA SINGLE FRINGED: A group not so large as the above varieties but having flowers about 3 in. across and finely fringed and ruffled on the edges. Quite free flowering.		
ELK'S PRIDE IMPROVED: Finely fringed Elk's purple.75	.20
JUBILEE: Carmine rose. Very showy.75	.20
PINK TRIUMPH: Brilliant rose pink.75	.20
PRIDE OF PORTLAND: Clear bright pink. Very showy.75	.20
THEODOSIA: Clear rose with golden throat.75	.20
ROMANY LASS: Deep crimson with dark throat.75	.20
WHITE BEAUTY: An outstanding single fringed pure white.75	.20
MIXED: A blend of all the above colors.75	.20

PETUNIA PLANTS Continued On Next Page.

PETUNIA PLANTS Continued

VARIETY	Price per doz.	Seeds
BALCONY PETUNIAS: This group has trailing plant habits and is used extensively for box edgings and hanging baskets.		
BLACK PRINCE: Deep velvety red.	.50	.10
COPPER ROSE: Color as named.	.50	.10
CORNFLOWER BLUE: A brilliant mid-blue.	.50	.10
CRIMSON: Color as named.	.50	.10
DEEP BLUE: A fine violet blue.	.50	.10
ROSE: Very fine bright rose.	.50	.10
ROSY MORN: A trailing counterpart of the popular bedder.	.50	.10
WHITE: A good trailing pure white.	.50	.10
MIXED: All the above colors and many other shades.	.50	.10
GRANDIFLORA PLAIN EDGED: Flowers and plant habit identical to single fringed group but flowers are not ruffled.		
BRILLIANT ROSE: Color as named.	.50	.10
BURGUNDY: Deep wine red with white throat.	.50	.10
DWARF ELK'S PRIDE: Elk's purple. A compact plant.	.50	.10
PINK GLORY: Fine flame rose.	.50	.10
VELVET FLAME: Velvety blood red.	.50	.10
MIXED: A grand mixture of the above and other colors.	.50	.10
NANA COMPACTA: This is a group having about the same plant habit as bedding Rosy Morn but the flowers are finely ruffled.		
ADMIRAL: Brilliant deep blue.	.50	.10
GLOW: NEW— The most brilliant carmine rose.	.50	.10
MARTHA WASHINGTON: The first introduction in this group. Color a bluish pink finely penciled and veined.	.50	.10
GENERAL WASHINGTON: Amaranth red. Very bright.	.50	.10
SALMON SUPREME: Rich coral salmon.	.50	.10
VELVET BALL: Very striking blood red.	.50	.10
MIXED: All the above in a fine blend.	.50	.10
MINIATURE GEM VARIETIES: These have plants 5 to 6 in. high that are literally covered with flowers about 2 in. across.		
BRILLIANT ROSE GEM: Deep bright rose.	.30	.10
CREPE de CHINE: Rich rose. Flowers have crepe like texture.	.30	.10
VIOLET GEM: Deep violet blue. Almost an Elk's purple.	.30	.10
DWARF BEDDING: (NANA ERECTA) These are the upright growing bedding type of which Rosy Morn is the best known.		
ALDERMAN: Deep violet blue.	.30	.10
BLUE BEDDER: Medium bright blue.	.30	.10
CELESTIAL ROSE: Brilliant rose. Improved Rose of Heven.	.30	.10
CREAM STAR: Soft cream white. Star shaped.	.30	.10
ROSE OF HEAVEN: Very bright rose pink. Popular.	.30	.10
ROSY MORN: Bright rose with white throat. An old favorite.	.30	.10
ROSE QUEEN IMPROVED: Intense clear rose.	.30	.10
SNOW QUEEN: A fine pure white bedding type.	.30	.10
MIXED: A grand assortment of colors — some not listed.	.30	.10
BEDDING HYBRIDS: Similar flowers to the above group but plants grow taller. Will make an excellent display.		
BLUE BEE: Rich violet blue.	.30	.10
FLAMING VELVET: Deep velvety blood red.	.30	.10
HOLLYWOOD STAR: Rose with amber throat. Star shaped flower.	.30	.10
HOWARD'S STAR: Purple with white star in the throat.	.30	.10
MARS: NEW— Deepest crimson.	.30	.10
RADIANCE: Cerise-rose with golden throat.	.30	.10
MIXED: A blend of all colors.	.30	.10
PORTULACA— MOSS ROSE: Finest double flowered mixed.	.25	.10
SALPIGLOSSIS—		
Painted Tongue or Velvet Flower. Very showy.		
GLOXINIFLORA MIXED: Bright velvety colors veined throat.	.30	.10
FINEST MIXED: Grand colors of all shades.	.30	.10
SALVIA— SCARLET SAGE.		
A standby bedding plant which makes a vivid spot of color in the garden during the late summer and fall. Its brilliant red spikes remain on the plant until frost. Offered by height only.		
DWARF 12 in. high — MEDIUM 16 in. high — TALL 24 in. high.	.50	.10
SCABIOSA—		
IMPERIAL BLUE MOON: Plants about 4 ft. high bearing flowers of azure blue. 3 in. in diameter on fine long stems for cutting.	.30	.10
STOCKS—		
EARLY COLONIAL: NEW— A group of Stocks that produce immense flower heads on long stems. Flowers are quite double and the colors are clear and bright. COLORS— Rose red, silver lavender, bright rose, pure white and mixed.		
	.25	.10
DOUBLE GIANTS OF CALIFORNIA: These are large flowered and more fully double than common Stocks. Plants bloom over a long season and the huge florets are often 2½ inches across.		
COLORS— Rich yellow, royal purple, pink, blue, red, chamois, white, rose, carmine, lavender and mixed.	.25	.10
SNAPDRAGONS—		
RUST RESISTANT MIXED: These are all of the rust resistant strain which is about 80 per cent immune to rust. This year we can only supply these in mixed colors.		
	.40	.10
VERBENAS—		
This popular bedding favorite has a use in every garden.		
BEAUTY OF OXFORD: These are the largest flowering with the most robust plant habit. They produce no seeds and so must be propagated by cuttings. COLORS— Cerise, pink and lavender.		
	1.20
GIANT BEDDING STRAIN: (Grandiflora) These are the fine large flowered bedding types. Very free flowering. COLORS— Royal blue, brilliant scarlet, salmon cerise, pink to rose red, violet with white eye, intense red, garnet with cream eye, rose with white eye, crimson, lavender with cream eye, flame pink, mid-blue, vivid rose pink, white and mixed.		
	.40	.10

ANNUAL FLOWERING PLANTS Continued

VARIETY	Plants per doz.	Seeds
ZINNIAS —		
CROWN O' GOLD: Novelty— Double Dahlia flowered type. The center of flower splashed with yellow over a bright ground color. Desert Gold Yellow or Mixed Pastel Tints.		
	.30	.10
CUPID FINE MIXED: Dwarf. Almost a foot high. Flowers are small button like and fully double.		
	.30	.10
FANTASY MIXED: Flowers composed of ray like petals that are interlaced. Quite large flowers about 4 in across. Bright colors.		
	.30	.10
GAILLARDIA FLOWERED MIXED: Striking novelty. Resemble the Picta Double Gaillardia. Good color range.		
	.30	.10
LILLIPUT TOM THUMB: Smallest Zinnia known. Plant is about 4 to 6 in. high bearing perfect double flowers about an inch across. A fine range of mixed colors.		
	.30	.10
HAAGEANA or MEXICAN ZINNIA: The most novel and showy of the small types. Flowers double and brightly colored. Each flower petal has a dark ground color with a border of contrasting light colors around the edge. You'll like this little fellow.		
	.30	.10
SCABIOSA FLOWERED MIXED: Medium tall with rather large Scabiosa like flowers. An interesting novelty.		
	.30	.10
HOWARD'S GIANT CRESTED: NEW— Resembles the Scabiosa Flowered type but has much larger flowers. The center of the flower is tufted with a double row of guard petals around the edge. Colors are a mixture of bright shades that are striking.		
	.30	.10
GOLD MEDAL DAHLIA FLOWERED: Large double flowers that resemble the Dahlia. Not quite so large as the Calif. Giants but flowers are fuller in the center. COLORS— Bright scarlet, pure white, orange and gold, old rose, old gold, deep pink, deep rose, yellow orange, light rose, deep lavender, crimson, rich yellow and mixed.		
	.30	.10
CALIFORNIA GIANTS: The largest flowered group of Zinnias. The flowers are often over 6 inches in diameter and plants are usually 3 to 4 ft. high. Flowers fully double. COLORS— Bright pink, cerise rose, golden yellow, deep lavender, dark red, soft pink, deep purple, pure white, bright rose, salmon rose, deep scarlet and finest mixed.		
	.30	.10
LILLIPUT POM-PON or BABY ZINNIA: Very showy. Plants about 18 in. high producing large quantities of flowers about 2 in. across. The flowers are pompon and fully double. An excellent bedding type. COLORS— Canary yellow, crimson, golden orange, lilac, rose pink, salmon rose, scarlet, burnt orange, white, blackish maroon, and finest mixed.		
	.30	.10

House, Pot and Bedding Plants

VARIETY	Price each
BEGONIAS—	
FIBEROUS ROOTED TYPES: These are fine for pots, baskets, porch box or border in yard beds where protected from drying wind and with about half a day sun or full shade. Their glossy green or bronze foliage is always fresh and clean and the plants are always in bloom. They are not used as much as their value justifies. COLORS— coral rose, white, carmine, clear pink, true pink, flesh pink, appleblossom, rose pink, rose with white center all with green foliage. Also cherry crimson, pink, coral rose, scarlet, blood red, rose pink, bright scarlet and deep scarlet all with bronze foliage of bronze edged leaves.	
	\$.10
6 for 55c; \$1.00 per dozen; 25 for \$1.75; 100 for \$6.50.	
TUBEROUS ROOTED TYPE: These are the large ones that grow from a tuber. They have been constantly gaining in popularity since they were so much featured at the Golden Gate Exposition. The flowers are immense sometimes as much as ten inches in diameter and are freely produced. We offer here started plants from 3 to 4 inch tubers so there is little danger of them not growing. Camellia Flowered Type ONLY in the following colors. White, dark red, rose, scarlet, pink, yellow, orange, salmon and apricot.	
	\$8.00 per dozen. .75
CACTI and SUCCULENTS—	
Highly colored and in a very unusual assortment of types, these are most interesting. We have many different kinds.	
	.25
Other fancy specimens at 35c and 50c each. Twelve assorted, no two alike our selection for \$2.50.	
FUCHSIAS—	
A plant highly prized for its beautiful flowers and bright foliage. Blooms almost all the time. Our collection consists of ten separate colors all the most showy obtainable. These are hardy along the coast.	
	.35
GERANIUMS—	
Our selection of these is extensive and they are useful in any home planting. Colors are bright red, scarlet, dark red, rose, bright pink, salmon pink and mixed. Large blooming plants 50c and \$1.00 each.	
BEDDING GRADE:	\$2.50 per dozen. .25
IVY—	
MINIATURE SELF BRANCHING: The new small leafed Ivy so popular for interior decoration or pot culture.	
	.50
LANTANA—	
A beautiful sweet scented plant that has bright colored flowers. COLORS Pink, orange, yellow and cream. Very fine for beds or boxes.	
	.30
PELARGONIUMS—	
MARTHA WASHINGTON GERANIUM: A favorite. Has brightly colored flowers having a center blotch. Free flowering. COLORS— Cerise, pink and red.	
	.35
WANDERING JEW—	
For box and basket edgings. Red, green and white and plain green.	
	.10
EXCEPT WHERE OTHERWISE PRICED six plants in this group will be supplied at the price of five.	

HARDY PERENNIALS

These are all one year, field grown plants and supply is not great. Order early.

PRICES ON THIS GROUP ARE 6 for \$1.50; \$2.50 per DOZEN, POSTPAID

- ANCHUSA: Lissadel. Bright blue about 3 ft. high. All heights mentioned, maturity.
- AQUILEGIA: (Columbine) Mrs. Nichols, spurless. Hybrid Long Spured. Both mixed.
- BELLIS: English Daisy. Large flowered mixed colors.
- DAISY: Single flowered Shasta Alaska.
- DIANTHUS: Cheddar Pinks. Dwarf with pink flowers. Winteri, compact plants with large bright hued flowers. Sweet Wivelsfield. A fine double flowered mixed.
- DIGITALIS: Foxglove. Large flowered hybrids with spotted throat. Mixed colors.
- GAILLARDIA: Colors coppery scarlet golden edge, copper self, red with yellow border, gold with maroon zone, bright orange and a fine mixture.
- GYPSOPHILA: Baby's Breath. Flesh pink single and double white varieties.
- SWEET WILLIAM: Dwarf Alpine Mixed, a fine rockgarden subject. Newport Pink Single salmon pink or Single Mixed a grand blend of colors.
- WALLFLOWER: Double Extra Choice Mixed. Early flowering about 20 in. high.
- TRITOMA: Red Hot Poker. A very showy plant.

PRIMROSES: Harrold's Pedigreed Giants.

Our large stock is all gone. We have some transplants from last summer sowing that are ideal for planting now and will make nice flowering borders next spring. These are giant flowered in a wide range of mixed colors. All are Polyantha-Veris Hybrids. PRICE \$1.50 per dozen; 25 for \$2.50

PANSY SEEDS: HARROLD' PEDIGREED STRAINS.

Our supply of Pansy plants is all sold for this spring. We can supply seeds of our complete line as follows. Harrold's Pedigreed Giant Art-Shades, the largest exhibition mixture; Harrold's Pedigreed Swiss Giants, the finest fancy type mixture; Harrold's Azure Giants, true brilliant blue; Harrold's Ruby Giants, finest red shades; Harrold's Golden Giants, golden yellow with dark center; Coronation Gold, pure yellow self and Swiss Pure White. PRICE: Packets of about 750 seeds \$1.00 each.

Hardy Phlox

Hardy Phlox are one of the finest hardy garden flowers. They have immense, brightly colored heads that stand well above the foliage and their blooming season is quite extended from late spring well into the summer. Once established they grow rapidly and may be divided and increased about every fourth year.

- | | |
|-----------------------------------|---|
| Africa: Carmine red. | Mrs. Jenkins: Pure white. |
| Antonette Six: Pure white. | R. P. Struthers: Salmon pink, scarlet eye |
| B. Compte: Reddish purple. | Rheinlander. Salmon, carmine eye. |
| Beacon: Cherry red. | Thor: Salmon pink. |
| Colonial: Lavender. | Von Hockberg: Purple. |
| Dr. Chas Mayo: White carmine eye. | |

PRICE, heavy two year plants 50c each; 3 for \$1.25

CLEMATIS VINES

Clematis is one of the most beautiful flowering vines for porch, trellis or fence. We will have only a limited supply this season and offer them as follows as long as supply lasts. If possible make second choice for unless you state definitely that it will not be acceptable we will send the nearest available variety to the one ordered. Free cultural sheet with each order.

VARIETIES and COLORS

- | | |
|-------------------------------|---------------------------|
| JACKMANI, Royal purple. | VILLE de LYON, Red. |
| Mme. BARON VEILLARD, Lilac. | KERMESIANA, Wine red. |
| RAMONA, Lavender blue. | MONTANA RUBENS, Rosy red. |
| GYPSY QUEEN: Dark purple. | LAWSONIANA, Blue. |
| THE PRESIDENT, Violet purple. | |

PRICE \$1.00 EACH; THREE FOR \$2.50, POSTPAID.

MINIATURE ROSES

PRICE \$.75 EACH; 3 for \$2.00 POSTPAID.

- Rosa Rouletti: Grows only about 5 inches high and the flowers are perfectly formed and fully double. Color is rose pink and flowers are only about an inch across.
- Oakington Ruby: Fully double flowers about 1½ inches across. Color is rich ruby-carmine. Plants are about 12 inches high when fully developed.

WE HAVE NO BUSH OR CLIMBING ROSES TO OFFER THIS SEASON.

GLADIOLUS BULBS

We offer here the very finest colors in fine varieties. Bulbs are all standard number one size — 1½ inch diameter and larger.

- | | |
|-----------------------------------|----------------------------------|
| Aldine, Sea shell pink. | Maid of Orleans, Milky white. |
| Bagdad, Smoky old rose. | Max Reger, Very fine light blue. |
| Beacon, Salmon with cream throat. | Milford, Tall blue. |
| Carioca, Oriental red. | Oregon State, Salmon apricot. |
| Golden Chimes, Soft yellow. | Paradise, Pure apricot. |
| Golden Cup, Deep yellow. | Picardy, Apricot pink. |
| Heritage, Exhibition pink. | Rewi Fallu, Blood red. |
| Honor, Lavender. | Rosa van Lima, Mauve pink. |
| Kassel, Scarlet. | Finest Blend, All colors mixed. |

PRICE 10c EACH POSTPAID — NOT LESS THAN A DOZEN SOLD.

A smaller size bulb that will bloom in mixed colors only at 25 for \$1.50 or \$5.00 per 100 postpaid.

Pink Calla Lily

These are a nice novelty. A bit smaller than white or yellow Calla but a rosy pink. Easy of culture. Price \$1.00 each; 3 for \$2.50 with culture sheet.

Croft Easter Lilies

Planting Stock for Fall Delivery

Croft Lilies have become tremendously successful along the Northern California, Oregon and Washington coast and returns on commercial plantings have been very high. Several growers have reported net returns of from \$5,000 to \$10,000 per acre and returns of several hundred dollars have been made on an area the size of a city lot.

While commercial plantings old enough to be salable as bulbs for forcing are in areas near the coast, there are successful plantings at many scattered locations throughout the northwest and it seems there is a reasonable probability of successful culture almost anywhere west of the Cascade Mountains below 1500 foot elevation. Plantings at about 1200 foot elevation in the Illinois Valley here in S. Oregon look well as do those in the Willamette Valley and around Cottage Grove, Medford and Ashland Oregon. Progress is being made also here at Grants Pass. With a well drained, loamy soil of reasonable good fertility their culture should be found profitable in the territory mentioned above.

Current prices on these bulbs as quoted in The Florists Review of April 12, 1945 range from \$700.00 per 1,000 for 7 to 8 inch circumference to \$1250.00 per 1,000 on 11 to 12 inch bulbs. The grower will receive about 70% of this figure from the jobber or he has the opportunity of trying to sell the stock himself. In view of the fact that the demand is easily ten times present supply the price level of this stock will remain good for several years; at least 4 or 5, and even when prices fall to 50% of present level with labor back more to normal they will still be very profitable.

We will publish much more complete data on these, their culture and sale and this will be supplied either at a small charge or free with the sale of planting stock. If you are interested please write us at once so we may know how many copies to print.

For planting time (October till March) delivery we expect to have available up to 300,000 planting stock of this variety. These will be all clean, healthy, inspected stock of 1½ to 3 inch circumference grade and are the size that is most economical both in time and cost to plant. They will produce additional planting stock for replanting the fall of 1946 and 1947 and the fall of 1947, with good culture and care should give you a good commercially salable crop.

PRICE ON THESE WILL BE

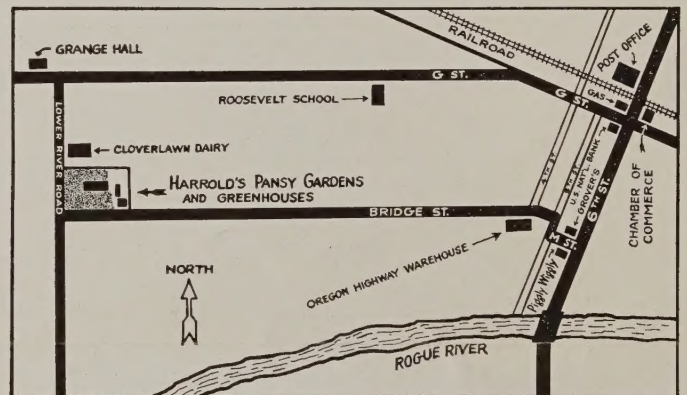
\$2.50 per doz; \$20.00 per 100; \$195.00 per 1,000

On orders booked before August First. A deposit of 50%

Will be required at time booking is made.

IF interested in this kind of stock it will be best to contact us at once as we know there will not be enough to go around this year and prices may advance when harvest gets under way. All offers and sales will be made subject to crop and shipments will all be made in rotation in which order is booked.

How to reach Harrold's



VISIT THE GARDENS WHICH ARE OPEN ON WEEK DAYS FROM 10:00 A. M. UNTIL 7:00 P. M. UNTIL JUNE 1st. OPEN SUNDAYS BETWEEN 12.00 NOON AND 6:00 P. M. Limited experienced help makes adherence to this schedule absolutely necessary and we will appreciate your co-operation.

Please Read Before Ordering

NO WARRANTY: In common with general practice in the nursery and seed trade we do not in any manner guarantee the results or crop obtained from any material we send out. We use every care in growing and handling the material offered and endeavor at all times to supply stock true to name and description. In no case, however, will we assume a responsibility greater than the amount received as the original purchase price and if for any reason an adjustment is indicated we reserve the right to make such adjustments in the form of replacement in identical kind ordered or cash at our option.

PAYMENT: All mail orders MUST be accompanied by the full amount of the order in cash. This may be sent by postal money order or note, express money order, bank draft or personal check. WE WILL NOT ACCEPT POSTAGE STAMPS for any part of the remittance so please don't send them. Where orders are made at the gardens for items which may not be in stock a deposit of 25% of the amount of order will be required; returnable in the event delivery can't be made.

ADDRESS — VISIT — PHONE

Harrold's PANSY GARDENS and GREENHOUSE
 GRANTS PASS Bridge St. and Lower River Rd. OREGON, U. S. A.
 P. O. BOX 29 PHONE 283-J